

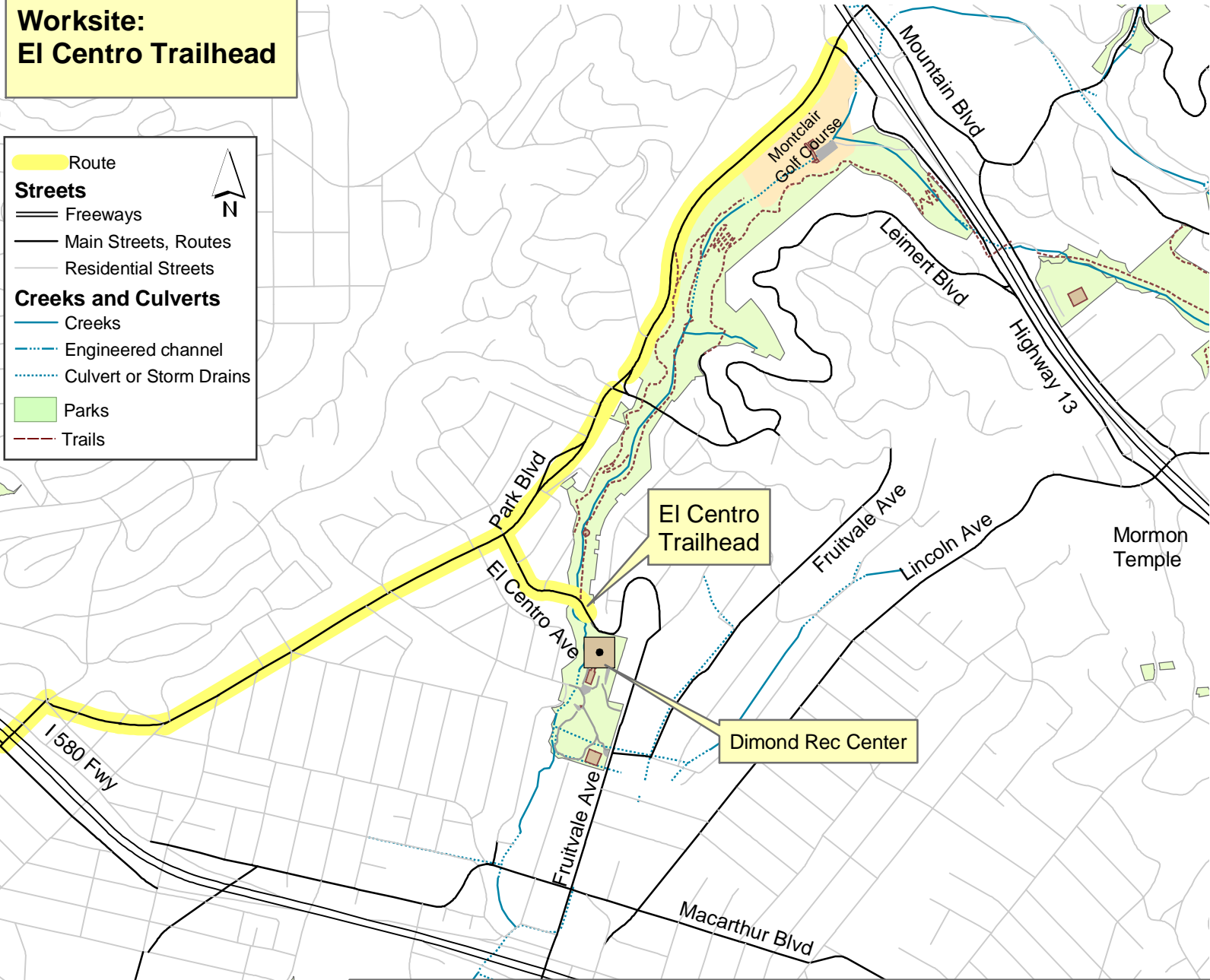
# Worksite: El Centro Trailhead

**Route**  
Route

**Streets**  
Freeways  
Main Streets, Routes  
Residential Streets

**Creeks and Culverts**  
Creeks  
Engineered channel  
Culvert or Storm Drains

Parks  
Trails



From Highway 13, exit at Park Blvd.  
From the north, turn right onto Park Blvd, then left onto El Centro  
From the south, turn left onto Mountain, then left onto Park, then left onto El Centro

From 580, exit at Park Boulevard:  
From the north, turn left onto Park Blvd, then right on El Centro  
From the south, turn right onto Park Blvd., then right onto El Centro

The El Centro trailhead is at the bottom of the hill. You can park on the shoulder, or in the Dimond Recreation Center parking lot.

0 500 1,000 1,500 2,000 Feet

By Karen Paulsell